



JULY 31, 2014

Fairwood Café, Beige Design

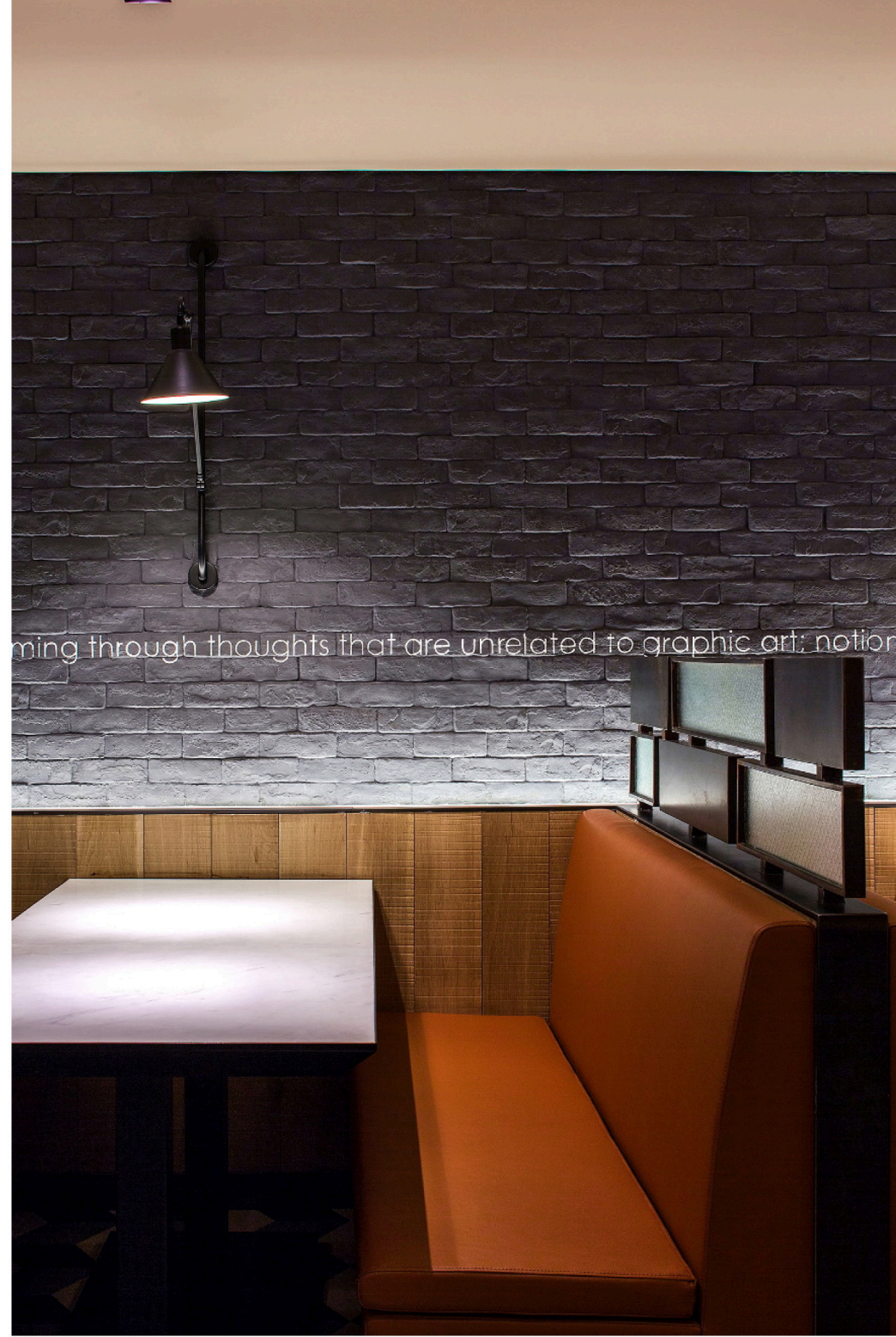
Working on the premise that by bringing art into the dining area, it can become a feast for the eyes as well as the taste buds, and inspired by the artist M C Escher, designers [Beige Design](#) have created a restaurant interior based on his drawing 'Cycle'.



The lively characters in the drawing act as a metaphor for the brand's logo, and help to define the space as a smart yet casual atmosphere at the stylish Fairwood Café, located in Beijing. From the outside, a sense of flexibility and harmony has been created by the black mild steel frames and the wire-glass folding gates.



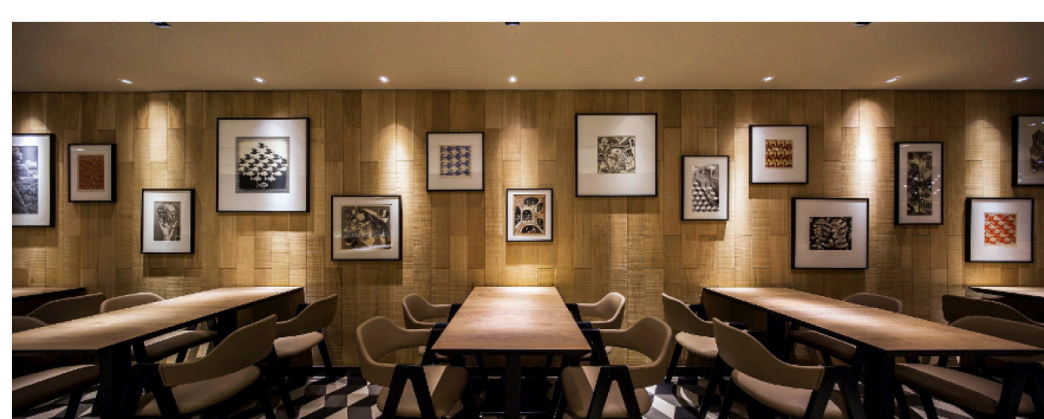
The restaurant boasts two dining areas, and Beige Design have designed different seating appropriate to the two styles of spaces. The grand dining hall has a large and eye-catching background wall, and a white oak cabinet is the focus of this space, creating a stylish atmosphere. This cabinet displays striking and beautiful tableware and other attractive homeware and utensils; and randomly chosen letters from the restaurant's name are highlighted in a subtle, yet attractive way, enhancing the visual impact.



Lamps of mild steel adorn the walls – set into white tiles, they light the tables to create the right mood for dining, and also add a hint of 'modern masculine' to the space. The grey tinted glass bubble chandeliers in hexagonal shapes echo the hexagonal floor pattern, created with black, grey and white tiles; and also the irregular shaped sculptures on the wall at the far end of the hall, which aim to stimulate the customers' imaginations.



The long corridor area of the restaurant offers a seating area with more intimacy and privacy to diners: a burnt orange leather covers the seating in the booths, and each is separated by wire and glass partitions. Wooden flooring here extends to the wall covering, whilst several of M C Escher's drawings hang on the wall. Text encapsulating the concept of the drawings is to be found on the opposite wall. A large picture frame hangs at the end of the corridor, reflecting the room as a picture, continuing the art gallery feel of the restaurant.



Images © Beige Design

SUBSCRIBE TO OUR
MAILING LIST

Your email:

SUBSCRIBE

RECENT POSTS

- > [Sea Fest, Prism Design](#)
- > [Fairwood Café, Beige Design](#)
- > [Nando's Glasgow, BuckleyGrayYeoman](#)
- > [Oslo, Borja Garcia Studio](#)
- > [Flipboard Café, Brolly Design](#)

ARCHIVES

- > [August 2014](#)
- > [July 2014](#)
- > [June 2014](#)
- > [May 2014](#)
- > [April 2014](#)
- > [March 2014](#)
- > [February 2014](#)
- > [January 2014](#)
- > [December 2013](#)
- > [November 2013](#)
- > [October 2013](#)
- > [September 2013](#)
- > [August 2013](#)
- > [July 2013](#)
- > [June 2013](#)
- > [May 2013](#)

- > [April 2013](#)
- > [March 2013](#)
- > [February 2013](#)
- > [January 2013](#)

CATEGORIES

- > [Interviews](#)
- > [Restaurant & Bar Design](#)

META

- > [Log in](#)
- > [Entries RSS](#)
- > [Comments RSS](#)
- > [WordPress.org](#)

AUTHOR

DETAILS

Latest posts

08.01.14 [Sea Fest, Prism Design](#)

07.28.14 [Nando's Glasgow, BuckleyGrayYeoman](#)

07.21.14 [Oslo, Borja Garcia Studio](#)

07.18.14 [Flipboard Café, Brolly Design](#)

07.16.14 [Cupetit Concept, GUOPLUS LivingDesign](#)