

Water Rhythm / Beige Design

08 MAY 2011
Interiors Residential Selected Works Beige Design China Hong Kong Victoria Bay

- Bookmark
- 40
- Like
- 36
- Twitter
- 0
- +1
- 11
- Pin It
- Email



© Ulso Tsang

Architects: **Beige Design** – Danny Chan
Location: **Victoria Bay, Hong Kong, China**
Project area: **40 sqm**
Photographs: **Ulso Tsang**



© Ulso Tsang

The most precious element of this Victoria Bay front apartment is its beautiful view where ocean and sky join into infinity. It is the Ocean that inspired the designer's abstract dialogue with the view; colors in silver, white and gray brushes on the surface of the interior to represent the sparking waves of the Ocean and the transitive changes of the sky views.

Water is the theme of the design while the difficulty of its movements is rather re-interpreted in the cladding materiality and colors on the surfaces; "water" in this interior is both tranquil and dynamic.



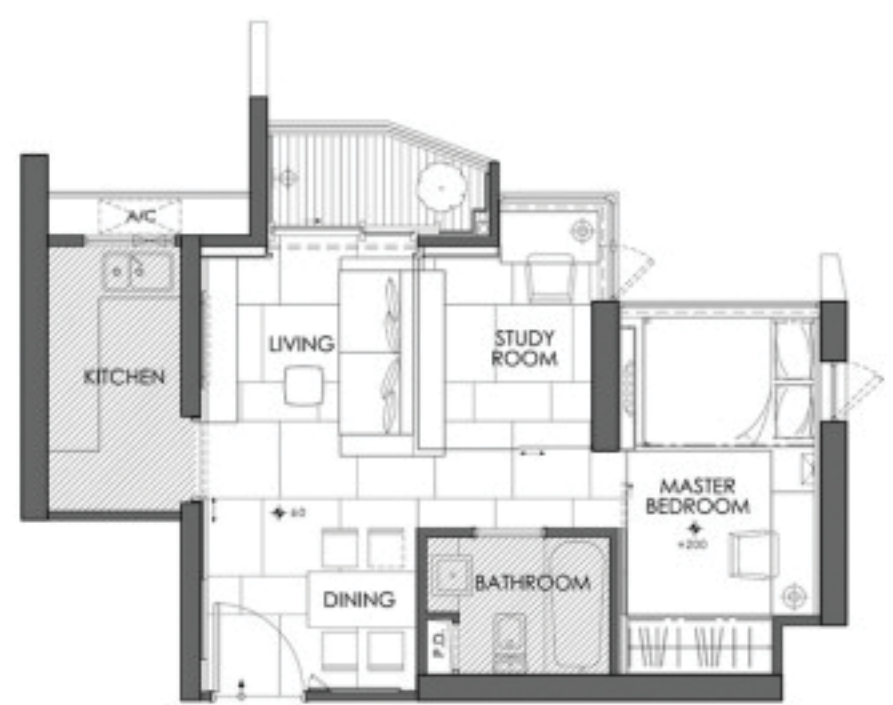
© Ulso Tsang

The table in the dining space provides a direct visual impression as if on a table there was a pond where water splashed out; on the top there hangs a spiral light fixture that represents the rippling pattern on the surface. The gray wood patterned floor in the living room is similar to the pattern of a Japanese dry landscape design. The most impressive component is a panel of glass interlaced with mirror and opaque materials; this panel along the Bay front view receives sunlight and reacts to the varying lighting quality like the surface of the Ocean.



© Ulso Tsang

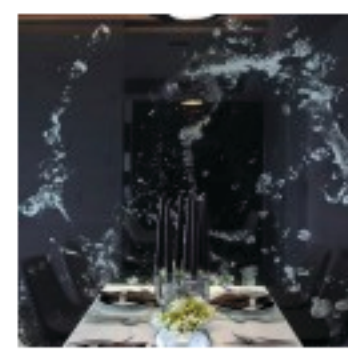
In contrast to energetic living room view, the reading space is encased behind a transparent glass; this independent space is spatially secluded yet a 3D graphic art piece breaks the silence to dialogue with the living room. In the master bedroom the reflection dominates the room where the door and dressing mirror are completely co mingled. Black piano paint coats the bed set that sporadically shows reflection of the Ocean light.



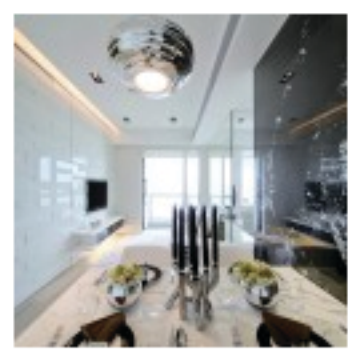
UNIT C FLOOR LAYOUT PLAN 1 : 50

plan

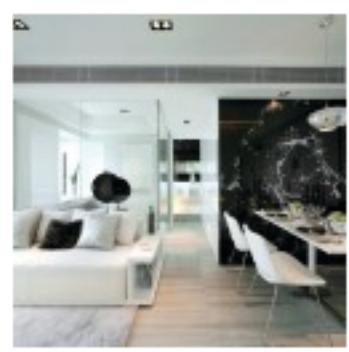
Even though water is the main theme of the design, the space leaves many blank spots for the dweller's personal interpretation. There are no excessive elements in this apartment, but the most selected items upon which he can contemplate.



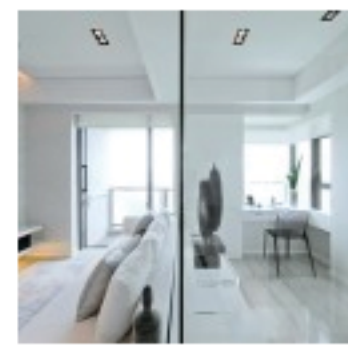
© Ulso Tsang



© Ulso Tsang



© Ulso Tsang



© Ulso Tsang



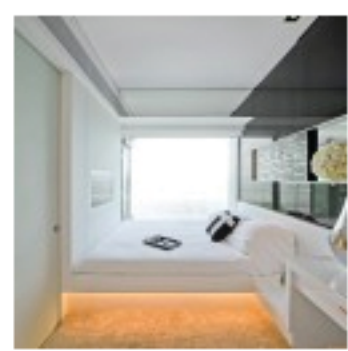
© Ulso Tsang



© Ulso Tsang



© Ulso Tsang



© Ulso Tsang



plan

