



Innovative restaurant interiors
Intérieurs innovants de restaurants
Nuevo diseño de restaurantes
Arredamenti innovativi per ristoranti

TASTE IT!

SANDU

Kenting Tea House Beige Design Ltd.

Location: Hong Kong, China Floor Area: 4,000 sq ft Completion Year: 2010 Photography: Ulso Tsang



Beige Design Ltd. brings in modern retro-chic to a Taiwan Cafe on a scooter, scooting around in exotic mood, getting caught by the sense of retrospective Taiwan in a modern setting, and indulging in the imagery of white and blue.

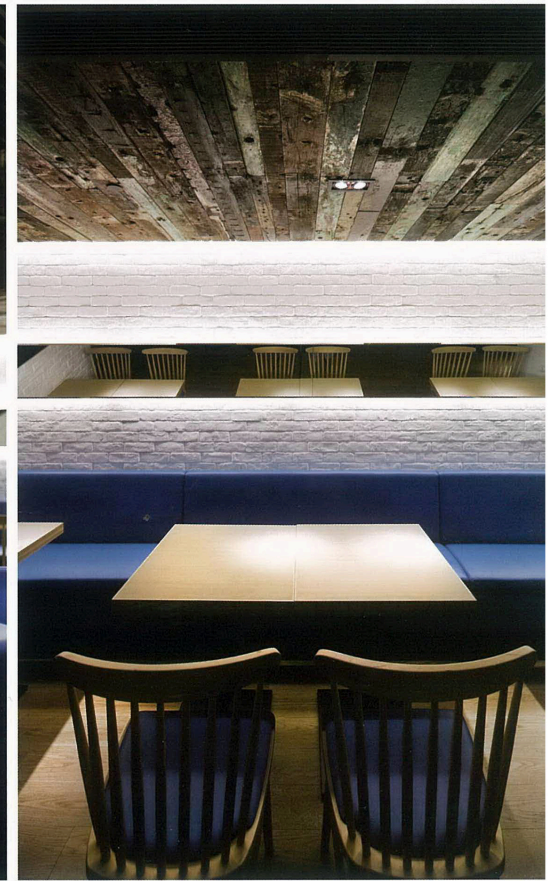
Led by the seashore odor of the natural rustic ship-wood on the ceiling, the raw but stylish details start telling their stories in a casual way.

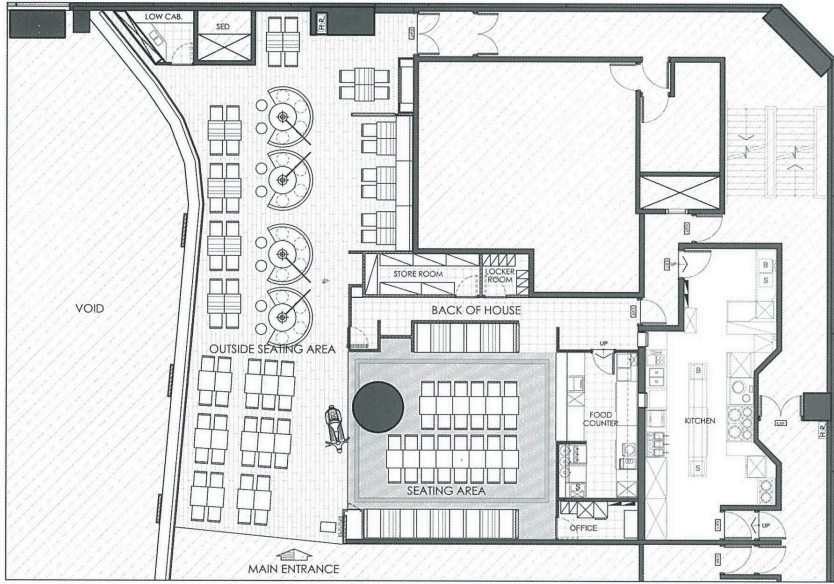
The open food counter which is wrapped by blackboard panels designed for food menu and free hand-writing. Everybody sit under the bubble-like pendant lights, which resonate with the rendered nostalgic Taiwan elements on the deck.

The circular booth seating, short and long tables and party seating caters for all customers from heart-chat to group party.

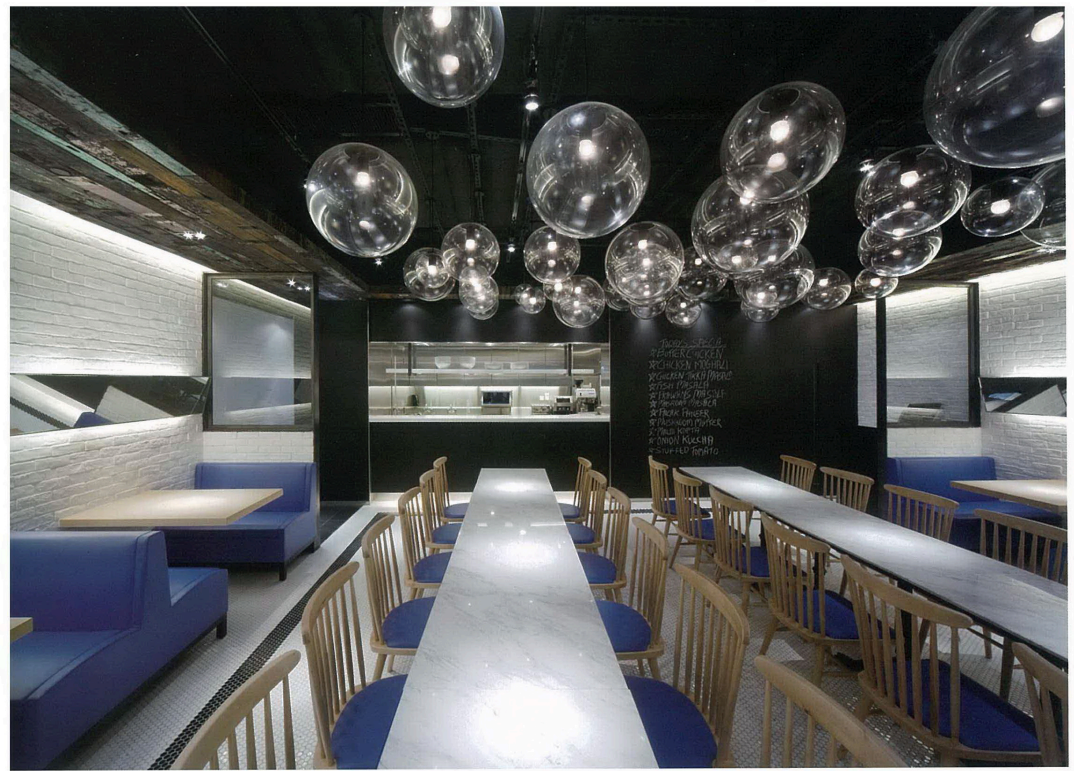
There lies a key color of sky blue outlining the contour of exoticism and nostalgia beside the sea.

Highlighted by the scooter at the entrance and the lighthouse image at the far end, the interior of the cafe demonstrates successful memory relocation and the localization of cultural elements with design.





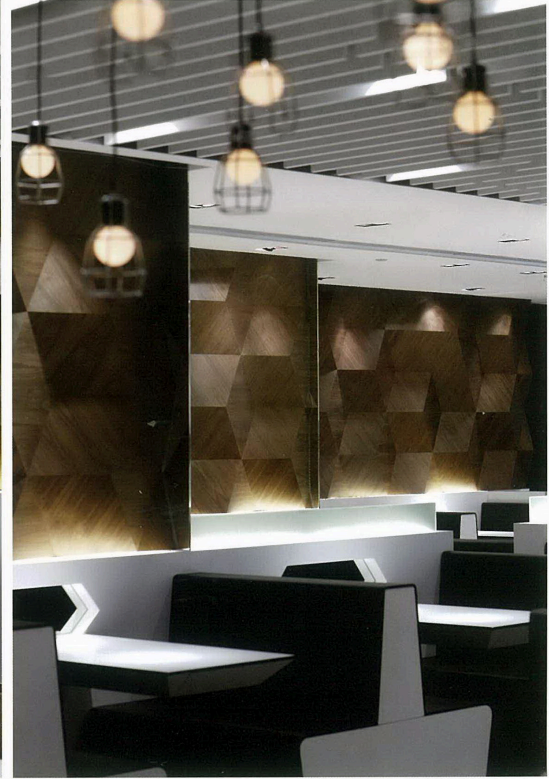
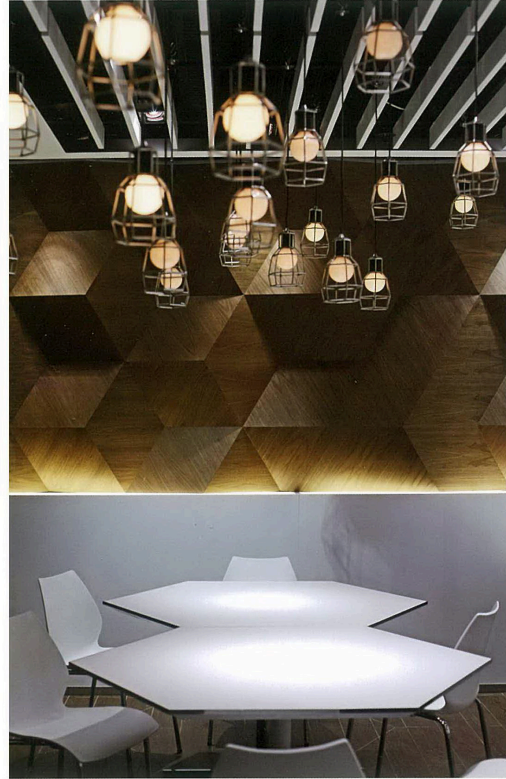
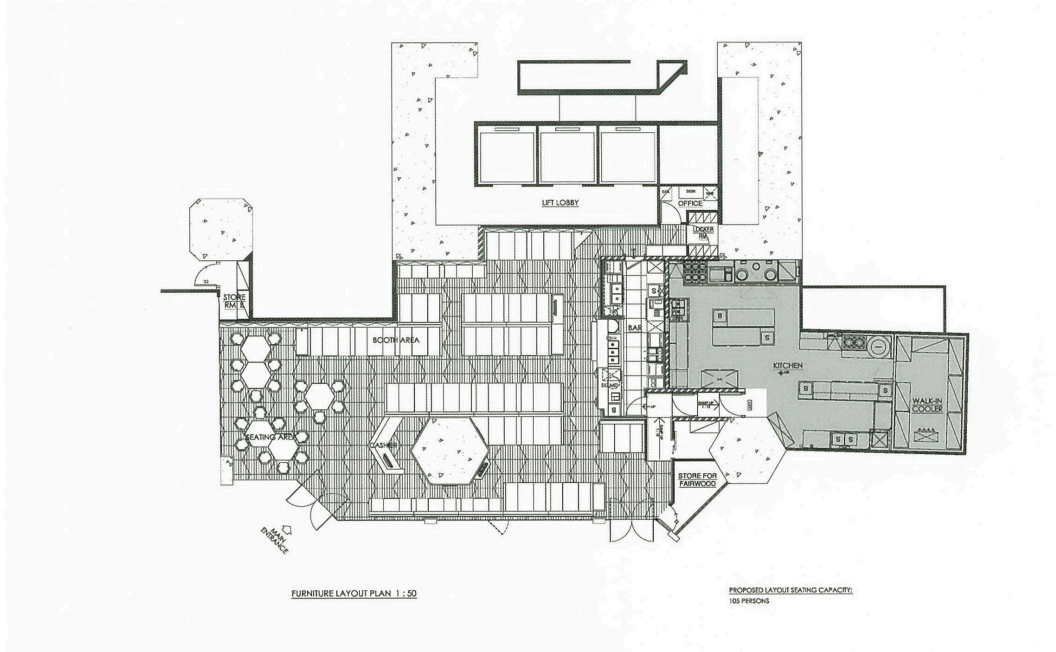
FLOOR PLAN

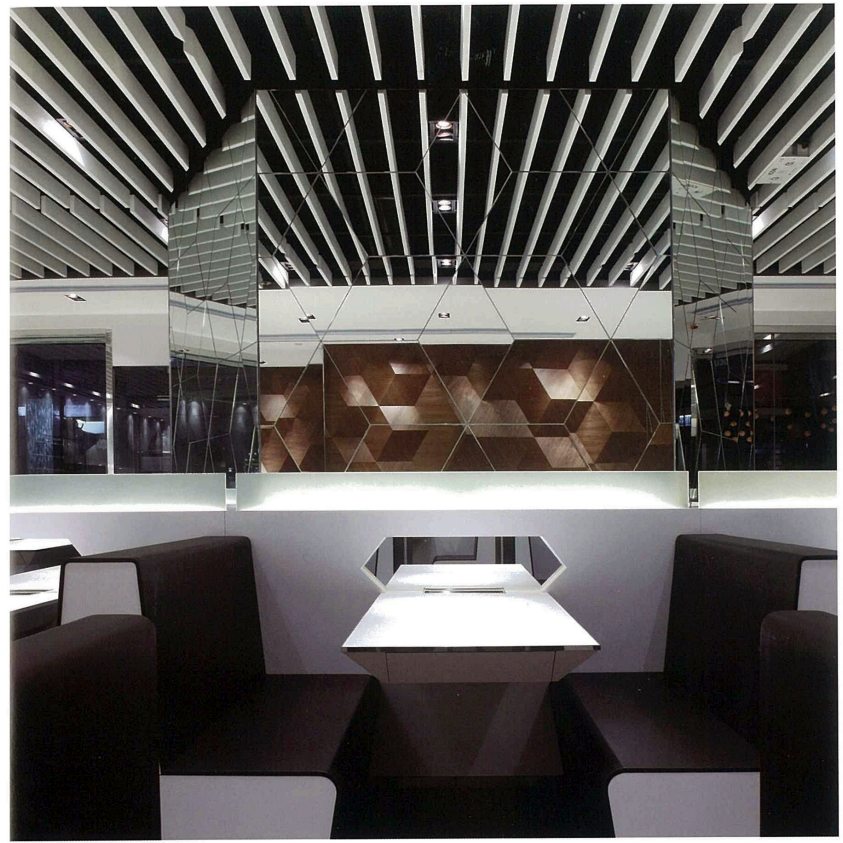
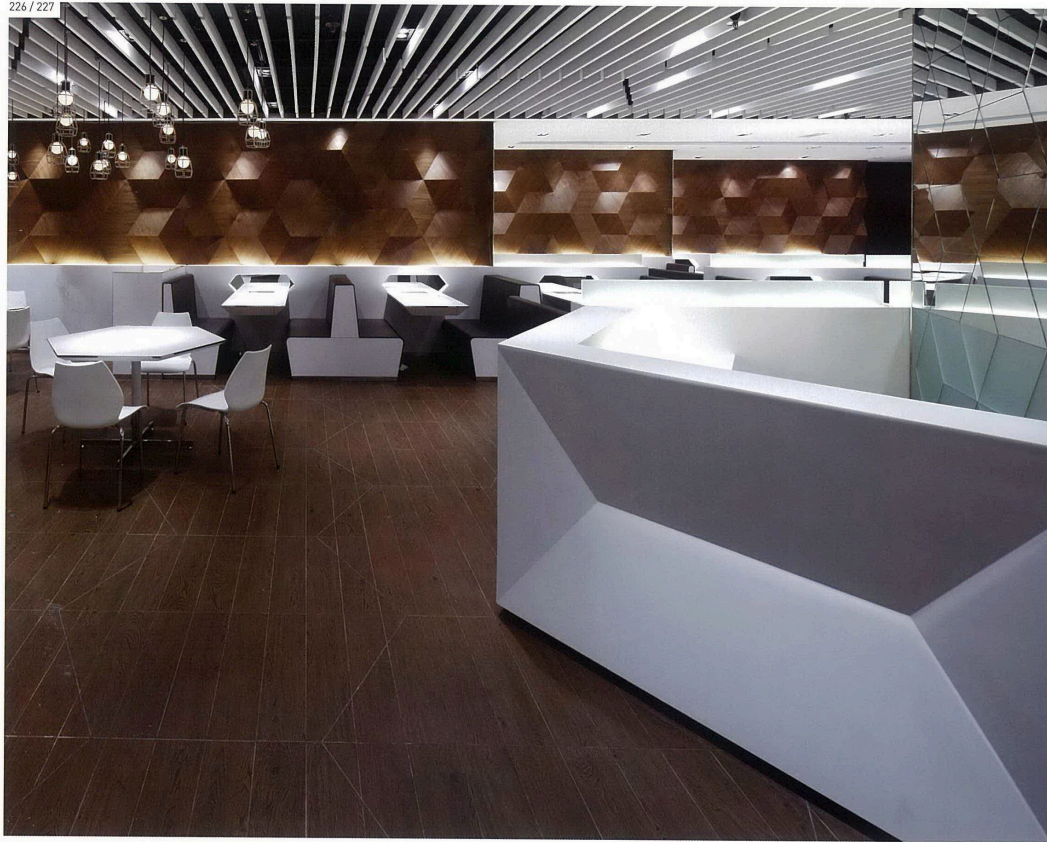




Buddies Café Beige Design Ltd.

Location: Hong Kong, China Floor Area: 180 sqm Completion Year: 2009 Photography: Ulso Tsang





Inspired by a huge hexagonal column in the floor plan, this delicate design was sparked off with the geometry chic and being resonated throughout the space. Taking a two-dimension concept, the geometric form develops it into a three-dimensional interior architectural perspective with innovations and explorations.

A pristine reception counter made with Corian® marks a fascinating welcome. Subtlety of the design can be traced from the diamond-cut hexagonal Corian® sculptural counters.

The loosing hexagonal seating area can be transformed to be a honeycomb to cater for flexible buddies' gatherings. While there are subtle lines dividing the ceiling blocks into hexagonal zones, the suspension light bulbs are also wired with polygon-shaped motifs in a loose hexagonal arrangement.

The stunning effect of the illusion is magnified by the hundreds of hexagons hidden in the three-layered staggered woodcraft panels in lights and shades.

Relax at the booth seating, you will find the intimacy of space from the details of the inclined table edges and table-end mirror.

The giant hexagonal column which inspired the whole concept is at last disappeared. These mirrors lead to strong reflections on the hexagonal cells in the space to multiply the effect of uniqueness and consistency.

